



## APPLICATIONS

- Designed for the optimal low frequencies extension in the MODUS active line array system
- Permanent installations in Theatres, Concert Halls, Clubs, Places of Worship, Conference Rooms, Indoor Sports, Arenas & Stadiums
- Sound reinforcement for live events: Touring, Bands, Orchestras, Conference both indoors and out, where uniform sound pressure level is required over the entire listening area

## KEY FEATURES

- Powered subwoofer in bandpass push-pull
- 0.70" birch plywood enclosure with textured scratch resistant paint finish
- 2 x 15" B&C neodymium woofers with 4" voice coil
- Class D amplifier delivering 2000W RMS
- SPL capability 146dB half space
- DSP with 6 eq. presets cardioid configurations
- User friendly built-in hardware manufactured with the highest safety standards
- Can either be suspended above the line array modules or ground stacked
- Optional flying bar and trolley for transport
- Completely Manufactured in Italy

## MODUS 215 FSA

Active Subwoofer



## PRODUCT DESCRIPTION

The FBT MODUS 215FSA powered subwoofer meet the following performance criteria: frequency response of 33Hz to 100Hz, peak output of 146dB half-space, input impedance 22 kOhm . FBT MODUS 215FSA is of bandpass design incorporating 2x15" B&C neodymium woofers with 4" voice coil. High efficiency internal amplifier 2000W in "D" Class with switch mode power supply and built in DSP signal processor with 6 eq. presets cardioid configurations. All components are mounted in a 0,70" birch plywood enclosure with a resistant black textured finish. The rear facing input panel provides XLR signal input and link, level control, preset, delay , phase 0°-180° switch, diagnostic led, power supply with Neutrik powercon cable duplex with input and output. The FBT MODUS 215FSA can be suspended above the line array modules or ground stacked.

## ELECTRONIC SPECIFICATIONS

System Type	Bandpass
Built-in Amplifier max.*	2000W RMS
Built-in Amplifier peak*	4000W
Frequency Response	33Hz - 100Hz
Max. SPL cont / peak**	140 / 146dB
Dispersion	Omnidirectional
Input Impedance	22kOhm
AC Power Requirement	1840VA

## PHYSICAL SPECIFICATIONS

Low Frequency Woofer	2 x 15" / 4" coil
Input Connectors	XLR with loop
Net Dimensions (WxHxD)	28,66" x 28,07" x 32,91"
Shipping Dimensions (WxHxD)	30,11" x 29,52" x 34,44" 31,29" x 43,30" x 35,62" (with pallet)
Net Weight	208,33lbs
Shipping Weight	231,48 (with pallet)
Enclosure Material	birch plywood
Power Cord	16,4ft

\* MAX: 2mS burst, RMS power on nominal speaker impedance  
MAX PEAK: based on max peak output voltage and nominal speaker impedance

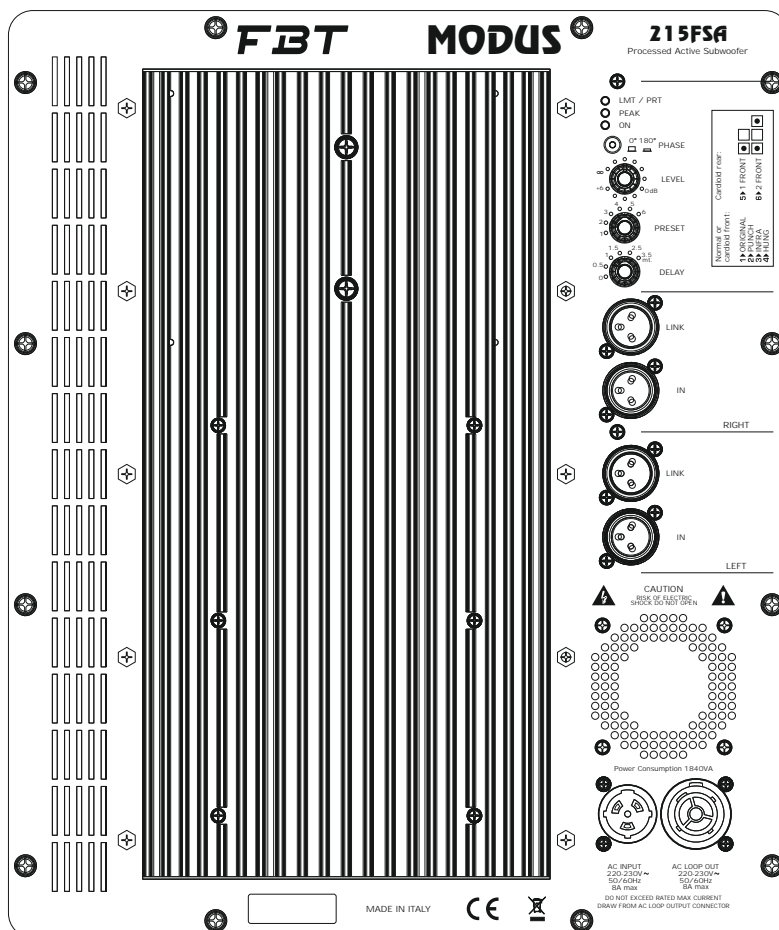
\*\* CONT. SPL: half space, based on power amp rating and LF transducer average sensitivity data, 125mS time average  
PEAK SPL: half space, based on peak power amp rating and system peak sensitivity, 10mS time average



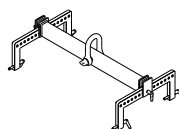
# MODUS 215 FSA

Active Subwoofer

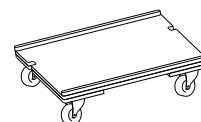
## CONNECTION PANEL



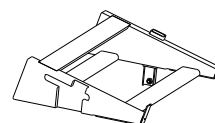
## ACCESSORIES



**MD-F SUB**  
Flying bar



**MD-T SUB**  
Trolley for 2 MODUS 215FSA



**MD-WB**  
Stand base to tilt  
MODUS 4805LA / MODUS 4820LA  
on MODUS 215FSA

## DIMENSIONAL DRAWING